

WAFS-103 DIFFERENTIAL PRESSURE PITOT TUBE FLOW METER

WISE AIR 4.0[®]
MEASURE TO MANAGE

2025



**Smart Measurement Solutions
for Compressed Air and Gases**

WISEAIR TECHNOLOGIES INDIA LLP

www.wiseair.in



About Us

Our Vision At WiseAir Technologies is to Offer Our Customers With Innovative and Advanced Measurement Solutions for Compressed Air and Gases at Affordable Costs. With Over 22 Years Experience in The Field of Compressed Air Management, We Have Developed Products that are More Accurate, Smart, Reliable, State-Of-The-Art and Easy to Use. We Aim to Transform The Traditional Manufacturing and Industrial Practices With Our Latest Smart Technologies. Hence We Primarily Focus On Offering Products Which Use Large-Scale Machine To Machine Communication (M2M) and Industrial Internet of Things (IIoT) To Provide Increased Automation, Improved Communication, Self Monitoring To Analyze and Diagnose Issues Without The Need For Human Intervention. Our “WA” Range of Smart IIOT Sensors, Can Be Easily Networked Together With Manufacturing And Energy Management Softwares. This Connectivity Allows For Seamless Data Collection, Exchange and Analysis To Potentially Facilitate Improvements In Productivity And Efficiency Resulting In Huge Economic Benefits.

Our Network

Our Smart Sensors are Developed with Design and Technology Support from Our Partners Across North America, Europe and Asia. With Our Strong Network of Partners, we offer Seamless and Best-in-Class Service to Our Customers.



Artificial Intelligence & Machine Learning Software

Our software are programmed to analysis and self Diagnose the Measured Datas

Smart IIOT Sensors

For measurement of Flow, Power, Dew Point and Pressure

Product Experts

Product Specialists with Decades of Experience in Compressed Air Measurement and Management

INTRODUCING THE **WAFS-103** DIFFERENTIAL PRESSURE PITOT TUBE FLOW METER

Technical Data Sheet

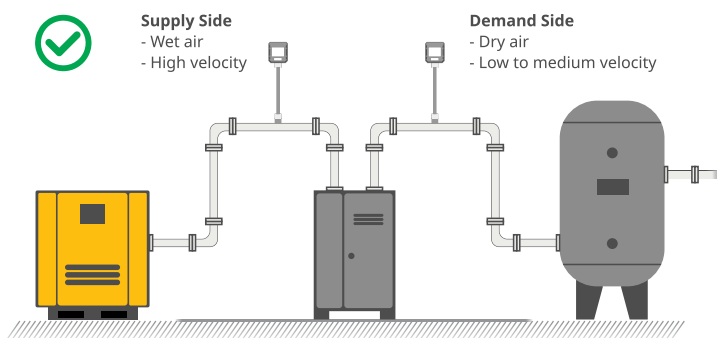
Measuring Range	
Flow	5 ... 300 Nm/s.
Pressure	0 to 16 Bar
Temperature	-40° C to +200° C / -40° C to +392° C
Ambient Temperature	-20° C to + 60° C
Process Medium	Air, Argon, Carbon Dioxide, Helium, Hydrogen, Natural Gas, Nitrogen, Nitrous Oxide, Oxygen
Applications	Wet and Dry Air High Velocities
Accuracy	
Accuracy	Flow: $\pm(1\% \text{ reading} + 0.3\% \text{ full scale})$ Pressure : $\pm 0.5\% \text{ Full Scale}$ Temperature : 0.5° C
Outputs	
Signals	Analog (4..20mA (4Wire, Isolated) / Pulse Output Digital : RS485 Modbus / RTU
Parameters	Flow, Consumption, Pressure, Temperature and Velocity
Power Supply	
Input	18 to 30V / 6.5W@24V
Anti Condensate	18 to 30V/ 24W@24V
Power Up EMC	According to IEC 61326-1
Display & Data Logging	
Display	2.8" LCD With Touch Panel
Data Logger	10,000,000 Samples
Other Informations	
Suitable for Pipe Sizes	DN 25 to DN 300
Available Shaft Length	250 mm & 400 mm
Electrical Connection	2 x 5 pin, M12, Female
Process Connection	ISO G1/2" Thread
Calibration Frequency	Every 2 Years



SPECIALLY DESIGNED WITH PATENTED ANTI CONDENSATION TECHNOLOGY

- ▶ Suitable for Wet Compressed Air
- ▶ Insertion Type With Anti Ejection Design
- ▶ Ideal for Compressor FAD Measurement
- ▶ Standard Options Include Built in Temperature and Pressure Sensors
- ▶ Integrated Display With Touch Functions and Optional Data Logging
- ▶ Bluetooth Interface For Easy Configuration
- ▶ Supports WiseAir 4.0 Bluetooth Mobile Application (Android Version)

Correct Installation



COLOUR GRAPHIC DISPLAY FOR ONLINE VALUES AND SENSOR SETTING

Flow Range

Pipe Size			Flow Range (Nm ³ /h)		Flow Range (cfm)	
Inches	DN	ID(mm)	Min Flow	Max Flow	Min Flow	Max Flow
1	25	25	8.8	530	5.17	311.9
1 ¼	32	32	14.5	868	8.53	510.81
1 ½	40	40	22.6	1357	13.3	798.59
2	50	50	35.3	2120	20.77	1247.62
2 ½	65	65	59.7	3583	35.13	2108.59
3	80	80	90.5	5428	53.25	3194.37
4	100	100	141.4	8482	86.21	4991.65
5	125	125	220.9	13253	129.99	7799.39
6	150	150	318.1	19085	187.2	11231.52
8	200	200	565.5	33929	332.79	19967.22
10	250	250	883.6	53014	519.99	31198.74
12	300	300	1272.3	76340	748.74	44926.09

Ordering Code

► WAFS103 - A

Pitot Tube Flow Sensor 0 (5) ...300 Nm/s with 250 mm Shaft With Modbus / Pulse / 4..20mA Output and Bluetooth Compatibility

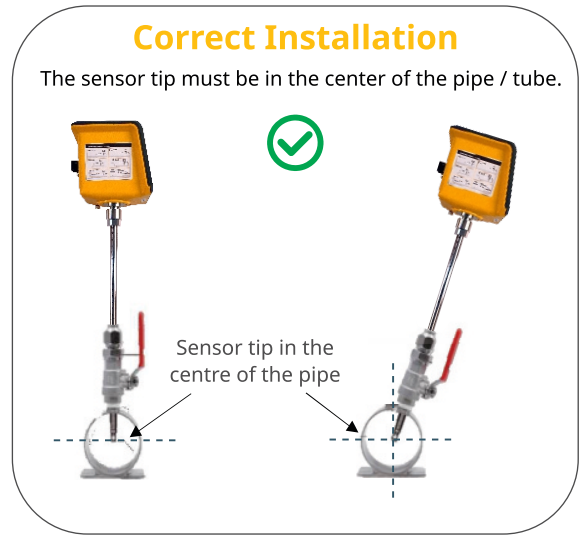
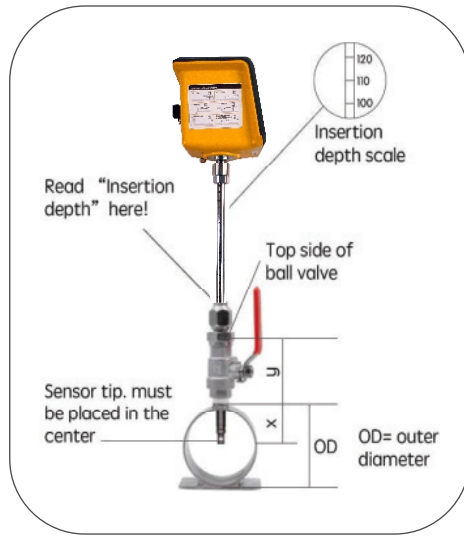
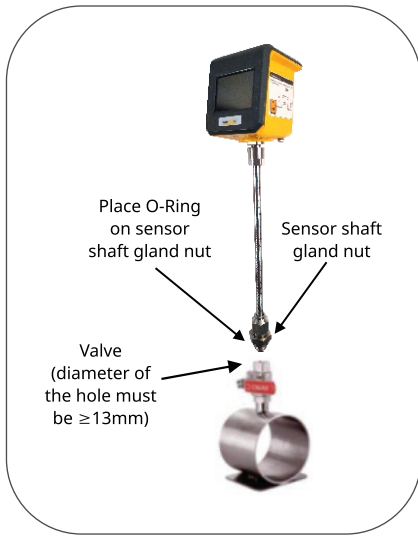
► WAFS103 - B

Pitot Tube Flow Sensor 0 (5) ...300 Nm/s with 400 mm Shaft With Modbus / Pulse / 4..20mA Output and Bluetooth Compatibility

► WAFS103 - DB

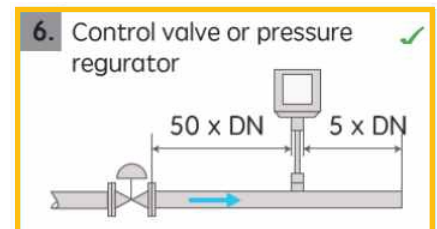
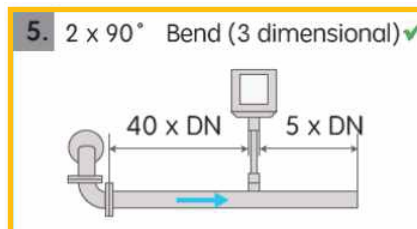
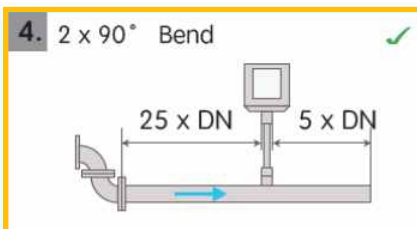
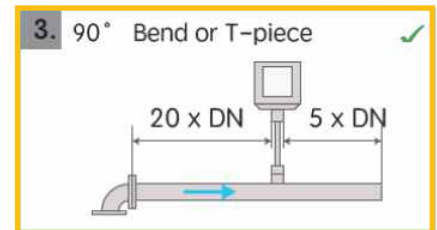
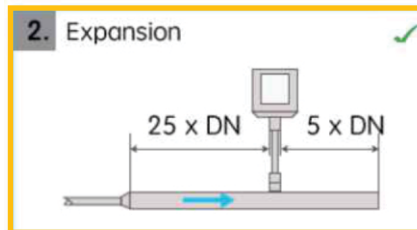
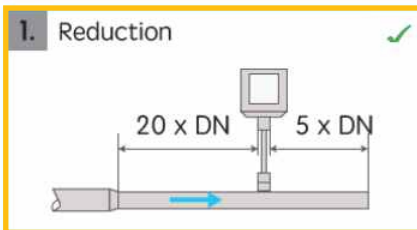
Pitot Tube Flow Sensor, Insertion Type 400 MM Shaft with Bi-Directional Flow, 2.5 Inch LCD Display, 0.1...300 Nm/s Measuring Range

Installation Reference



Correct Installation

DN = Pipe Diameter





For More Info
SCAN HERE



**UNDERSTAND COMPRESSED AIR SYSTEM DYNAMIC
WITH OUR ADVANCED MEASUREMENT SOLUTIONS**

MEASURE – MANAGE – SAVE – SUSTAIN



WISEAIR TECHNOLOGIES INDIA LLP

- +91 90477 78715
- info@wiseair.in
- www.wiseair.in
- Plot No.12, Sri Venkatalakshmi Nagar,
Singanallur, Coimbatore - 641005. INDIA.

Follow Us

